




**Uredba o finansijskoj podršci dualnom obrazovanju**  
**Regulation on financial support for dual education**

JPM

PARTNERS



Uredba o finansijskoj podršci dualnom obrazovanju - Regulation on financial support for dual education

Publisher: JPM | Partners

Delta House, 8a Vladimira Popovića street

[www.jpm.law](http://www.jpm.law)

Authors: Marko Ilić, Senior Associate, Dimitrije Stepanović, Associate

Design and prepress: JPM | Partners

Copyright: © JPM | Partners 2024 All rights reserved.

**Disclaimer:**

The sole purpose of this publication is to provide information about specific topics.

It makes no claims to completeness and does not constitute legal advice.

The information it contains is no substitute for specific legal advice.

If you have any queries regarding the issues raised or other legal topics, please get in touch with your usual contact at JPM & Partners.

Dana 29.12.2023. godine, Vlada Republike Srbije je donela Uredbu o finansijskoj podršci dualnom obrazovanju ("Sl. glasnik RS", br. 120/2023), koja je stupila na snagu dana 06.01.2024. godine (u daljem tekstu: Uredba).

Uredbom je bliže uređena finansijska podrška dualnom obrazovanju kroz pomoć školama i privredi radi školovanja učenika za deficitarna zanimanja, i to kroz dodelu sredstva na dva načina:

1. subvencionisanjem dela naknade za učenje kroz rad koju poslodavci plaćaju učenicima upisanim na dualne obrazovne profile na kojima se učenici školuju za deficitarna zanimanja;
2. podrškom školama za upis učenika na dualne obrazovne profile na kojima se učenici školuju za deficitarna zanimanja.

Nadležnost za utvrđivanje vrste i iznosa finansijske podrške, uslova za konkurisanje za njihovu dodelu, raspisivanje i sprovođenje konkursa, kao i za utvrđivanje liste deficitarnih zanimanja u skladu sa odredbama navedene Uredbe, pripada Kancelariji za dualno obrazovanje i NOKS (u daljem tekstu: Kancelarija).

On 29 December 2023, the Government of the Republic of Serbia adopted the Regulation on financial support for dual education ("Official Gazette of the RS", No. 120/2023), which entered into force on 6 January 2024 (hereinafter: the Regulation).

The Regulation further regulates financial support for dual education through aid to schools and the economy for the purpose of educating of students in Shortage occupations. This support is granted through the allocation of funds in two manners:

1. subsidizing a part of the learning-by-doing remuneration paid by employers to students enrolled in dual educational profiles, where students are educated for shortage occupations ;
2. supporting schools for enrolling students in dual educational profiles, where students are educated for Shortage occupations.

The competence for determining the type and amount of financial support, the conditions for applying for them, announcing and conducting the contest, as well as for determining the list of Shortage occupations in accordance with the provisions of the aforementioned Regulation, belongs to the Office for Dual Education and NQFS (hereinafter: the Office).

## **SUBVENCIONISANJE DELA NAKNADE ZA UČENJE KROZ RAD**

Prva vrsta finansijske podrške dualnom obrazovanju daje mogućnost poslodavcima da ostvare pravo na isplatu dela naknade učenicima koji pohađaju dualne obrazovne profile na kojima se školuju za deficitarna zanimanja, i to u maksimalnom iznosu od 50% neto iznosa minimalne naknade za učenje kroz rad, sa pripadajućim doprinosima. Međutim, u slučaju da nakon sprovedenog konkursa u fondu preostanu neraspoređena sredstva, subvencije je moguće dodeliti i u većem iznosu od navedenog.

Uredbom je propisano da je kao uslov za prijavu poslodavaca na konkurs potrebno pribaviti:

1. Potvrdu o ispunjenosti uslova za učenje kroz rad;
2. Zaključen ugovor, odnosno predugovor o dualnom obrazovanju sa školom;
3. Potvrdu Poreske uprave o isplaćenim svim dospelim obavezama;
4. Dokaze o isplaćenim finansijskim obavezama prema učenicima, za poslodavce koji već imaju učenike na učenju kroz rad;
5. Dodatne dokaze o ispunjenosti uslova za prijavu za dodelu subvencija koji su predviđeni Konkursom.

## **SUBSIDIZING PART OF THE REMUNERATION FOR LEARNING-BY-DOING**

The first type of financial support for dual education allows employers to claim payment for a part of the remuneration to students attending dual educational profiles for Shortage occupations, up to a maximum of 50% of the net amount of the minimum remuneration for learning-by-doing, with applicable contributions. However, should unallocated funds persist in the fund following the conducted contest, subsidies can be granted in a higher amount than specified.

The Regulation mandates that employers must obtain the following documents to be able to participate in the contest:

1. Confirmation of the fulfillment of the conditions for learning by doing;
2. Concluded agreement or pre-agreement on dual education with school;
3. Confirmation from the Tax Administration that all due obligations have been paid;
4. Proof of settled financial obligations to students for employers who already have students in learning-by-doing;
5. Additional proof of the fulfillment of the conditions for applying for subsidies provided by the Contest.

## **PODRŠKA ŠKOLAMA ZA UPIS UČENIKA NA DUALNE OBRAZOVNE PROFILE NA KOJIMA SE UČENICI ŠKOLUJU ZA DEFICITARNA ZANIMANJA**

Druga vrsta finansijske podrške dualnom obrazovanju daje mogućnost školama da prijave sve učenike upisane u prvi razred srednje škole na odgovarajući dualni obrazovni profil, i na taj način im, pored zakonom propisane naknade za učenje kroz rad, obezbedi dodatni prihod u devet jednakih mesečnih rata u iznosu koji se utvrđuje konkursom.

Ugovor o dodeli sredstava za ovu vrstu podrške zaključuju škola, Kancelarija i učenik, odnosno njegov roditelj ili drugi zakonski zastupnik.

Od učenika se očekuje da redovno pohađa nastavu i da ostvaruje pozitivan uspeh. U suprotnom, može izgubiti pravo na isplatu pojedinih rata subvencije.

## **SUPPORT TO SCHOOLS FOR ENROLLING STUDENTS IN DUAL EDUCATIONAL PROFILES WHERE STUDENTS ARE TRAINED FOR SHORTAGE OCCUPATIONS**

The second type of financial support for dual education allows schools to enroll all first-grade high school students in the corresponding dual educational profile, thereby ensuring additional income in nine equal monthly installments determined by the contest, in addition to the legally prescribed remuneration for learning-by-doing.

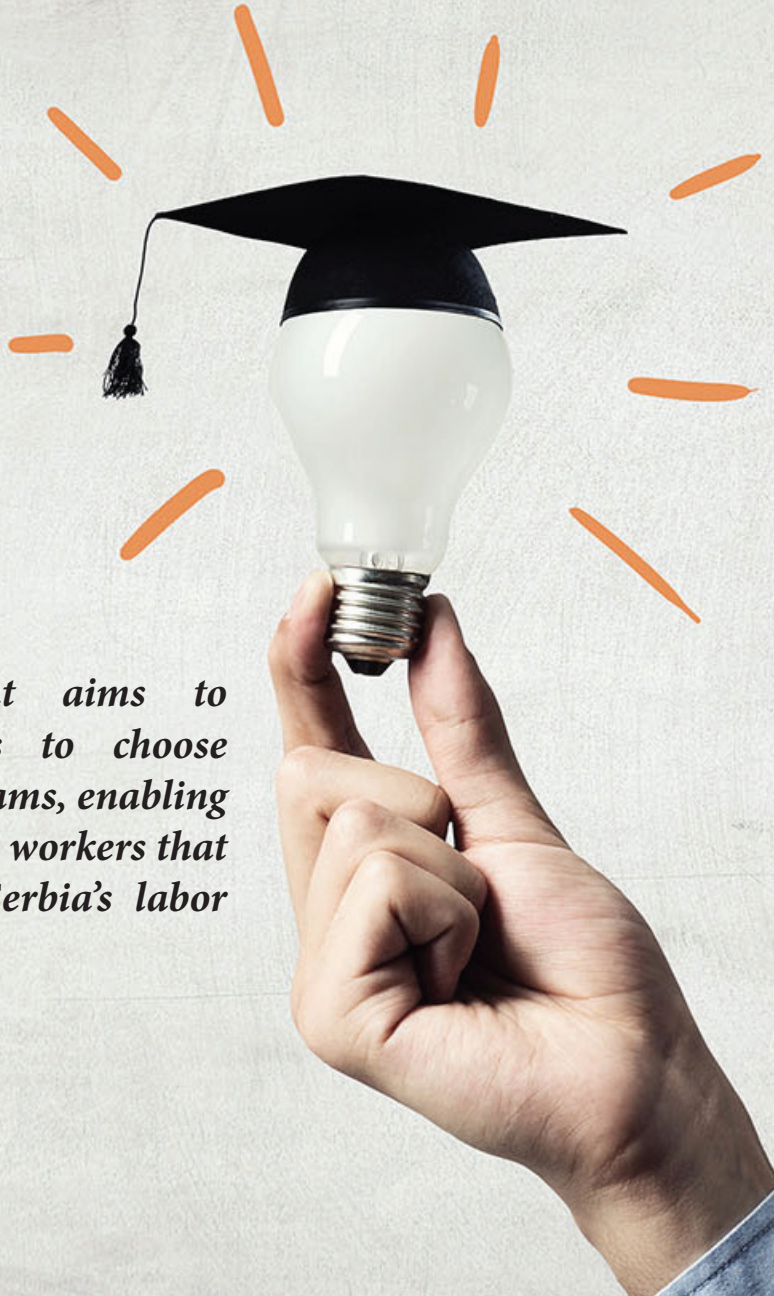
The agreement for the allocation of funds for this type of support is concluded between the school, the Office, and the student, or their parent or other legal representative.

Students are expected to regularly attend classes and achieve positive results. Otherwise, they may lose the right to receive individual subsidy installments.

“

*The Serbian government aims to encourage more students to choose vocational education programs, enabling businesses to acquire skilled workers that are currently lacking in Serbia's labor market.*

“





## **IZVEŠTAVANJE**

Vezano za obe vrste finansijske podrške treba napomenuti da je Uredbom predviđena i obaveza poslodavaca, odnosno škole, da izveštavaju Kancelariju o trošenju namenskih sredstava subvencija kroz dostavljanje periodičnih i završnih finansijskih izveštaja, u ugovorom predviđenim rokovima.

U slučaju utvrđenja nenamenskog trošenja, Kancelarija će raskinuti ugovor i zahtevati povraćaj prenetih sredstava, a poslodavac, odnosno škola će biti dužni da sredstva vrate sa zakonskom kamatom.

## **ZAKLJUČAK**

Ovom Uredbom Vlada RS nastoji da privoli veći broj učenika da se opredele za dualne obrazovne profile, i na taj način prevaziđe problem nedostatka radne snage u deficitarnim zanimanjima, kao što su bravari, operateri na mašinama, pekari, kuvari, električari, mehaničari i dr. Istovremeno će sa ostvarenjem svrhe Uredbe i privrednici u deficitarnim delatnostima moći da ostvare korist, na način što će na lakši i povoljniji način doći do radne snage koja trenutno nedostaje na tržištu rada u Republici Srbiji.

## **REPORTING**

Regarding both types of financial support, it should be noted that the Regulation imposes an obligation on employers or schools to report to the Office on the use of dedicated subsidy funds by submitting periodic and final financial reports within contractually specified deadlines.

In case of determined misallocation of funds, the Office will terminate the contract and demand the return of transferred funds. Employers or schools will be obligated to return the funds with statutory interest.

## **CONCLUSION**

Through this Regulation, the Government of the Republic of Serbia aims to encourage a larger number of students to choose dual educational profiles, thereby overcoming the problem of a shortage of workforce in Shortage occupations such as locksmiths, machine operators, bakers, chefs, electricians, mechanics, etc. At the same time, with the realization of the purpose of the Regulation, entrepreneurs in deficit activities will also be able to benefit, in a way that they will find the labor force that is currently lacking in the labor market in the Republic of Serbia in an easier and more favorable way.

# Authors



Marko Ilić

Senior Associate

E: [marko.ilic@jpm.law](mailto:marko.ilic@jpm.law)



Dimitrije Stepanovic

Associate

E: [dimitrije.stepanovic@jpm.law](mailto:dimitrije.stepanovic@jpm.law)

JPM | PARTNERS

8a Vladimira Popovića,

DELTA HOUSE, V Floor

11070 Belgrade, Serbia

T: + 381/11/207-6850

E: [office@jpm.law](mailto:office@jpm.law)

[www.jpm.law](http://www.jpm.law)